



# Environmental assessment in product tendering

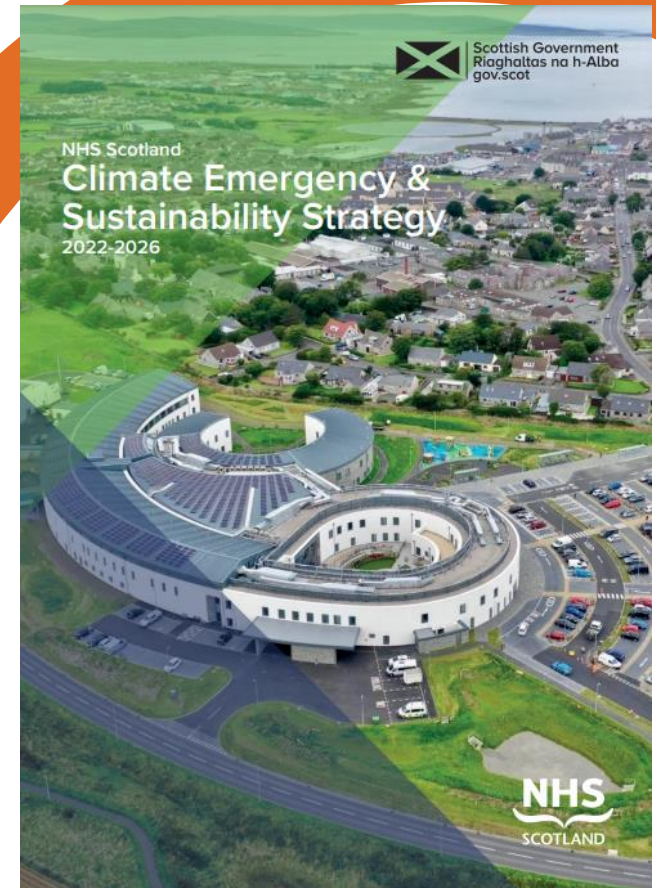
Advancing  
toward Net Zero  
through  
procurement  
leadership

# Why are we doing this?

## Scotland's target;

"...reducing supply chain emissions to net-zero by 2045..."

- Contracting lifecycle
- Supplier engagement
- Recognise opportunities and success



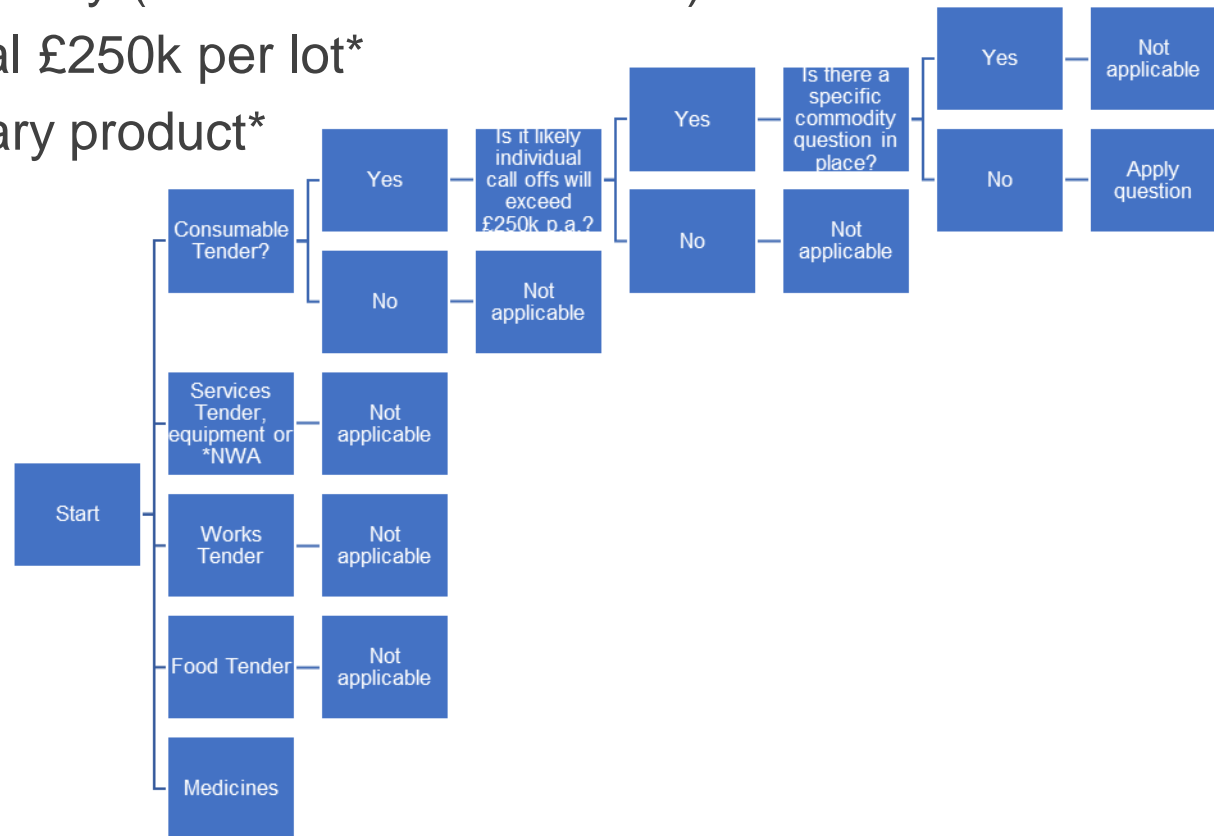
# What are we doing?

- Model Question to ensure sustainability considerations
- Supports our procurement team
  - Question
  - Guidance for evaluation
- Simplicity and transparency in ways of working
- Alignment with UK Healthcare partners



# Model Question Scope

- Product only initially (non-food consumables)
- Exceeds annual £250k per lot\*
- Focus on primary product\*



\*where multiple lots, application at discretion of commodity manager

# Model Question

- A. How do you incorporate climate change considerations into your product development and manufacturing processes? Please describe the processes and procedures in place to avoid harmful environmental impacts.
- B. Explain your approach to mitigating harmful environmental impacts in your product sourcing and distribution activities. Focus on the distribution chain from manufacturing to the end customer, including design and its contribution to mitigating impacts in sourcing, transport, logistics, and storage.
- C. How do your product design processes mitigate associated harmful environmental impacts? This question aims to understand the standards in place to minimize impacts throughout the product or service life cycle, such as changes in materials to support reuse or circular economy initiatives.

# Model Question - scoring

- 2 examples specifically linked to the product
- Seeks information across design, manufacturing, sourcing and logistics processes
- Good scores requires quantifiable evidence /validation
- Not looking for general organization level details



## Key details ...

- 1<sup>st</sup> December launch
- Information only – 6 months
- Internal Engagement
- Supplier engagement (drop in and pre-recorded content)
- Feedback (internal and external)
- Review period after 6 months trial.
- If successful, question becomes mandatory with 10% weighting.





**THANK YOU!**



**Questions?**